

Technical Specifications

Small Hall

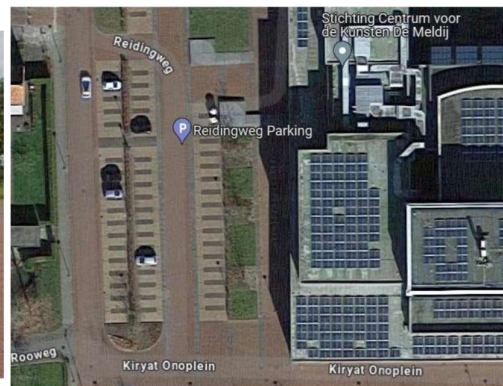


General

Contact information

Address: Laweiplein 1
Zip code: 9203 KL
City: Drachten
Country: Netherlands

Address for loading dock for your navigation: Reidingweg 1, Drachten



Phone numbers

Reception: +31 512 – 33 50 00
Box office: +31 512 – 33 50 50
Technical department: +31 512 - 33 50 60
Email technical department: techniek@lawei.nl

Specifications

Theatertype: End stage theater
Standard start times: Evening 20:30
Matinee 14:00
Youth performance 19:00/19:30

Seating capacity

Total: 225

Special notes: The seating can be retracted

Dimensions

Stage measurements (in m)

Width: 14 m
Height: 10 m, 7.5 m to bridges
Depth with Seating: 12 m
Depth with Retracted Seating: 23 m

Stage

Loading and unloading

Description: Indoor loading dock
Number of trucks: 1 to 2 (used jointly with the Main Hall)
Accessible by trailer: Yes
Parking Space Dimensions: 17.16 x 8.38 x 4.31 (L x W x H)
Decor Lift to 1st Floor: 7.60 x 2.20 x 2.70 (D x W x H)
Door width: 1.92m

Soft goods

Side black: Yes, around on rail

Lift

Brand: Alplift, Single-person lift
Other climbing equipment: Various ladders

Communication:

ASL Intercom
Fixed stations: 3

PA System: Yes, in dressing rooms and green room

Fly bar

Specifications

Number of flybars:	9 units, in pairs between the light bridge
Flybar length:	12 m
Load capacity:	300kg
Manufacturer:	DTS2
Control location:	Stage left
Control:	Operated individually, adjustable speed
Maximum Load under Steel Cable:	150kg
Point Load between Steel Cables:	100kg
Point Load at the End of Line:	50kg
Maximum Load for Chain Hoists:	250kg
Fly gallery available:	No

Sound

Auditorium system

Auditorium:
Centercluster:
Sub:
Infills:
Infills FOH:
Processing:
Control:

Meyer Sound

1x UPQ-1P per kant
3x UPJunior
2x 600-HP
2x UPJunior
2x UPJunior
Galileo Galaxy 616
L/R, L/R/C, L/R/S, L/R/C/S

Desk*
Analog:

Midas VeniceF 24CH
Soundcraft M4 en M8

Digital:

Allen&Heath QU-16
Allen&Heath QU-24
Midas Pro2c
Yamaha LS9

Microphones*: Various types of microphones available upon request, such as Shure, Sennheiser, Neumann, and AKG.

Monitors*

KS Audio passive monitors

2x 10"
4x 12"
2x 15"

**Note:* Usage of mixing consoles, monitors, and microphones is subject to coordination with other venues.

Grand pianos

1 x Yamaha C5
1x Yamaha P116T*
1x Yamaha B2*

Standard tuning at 440Hz, tuning to 442Hz available upon request.

* Pianos available upon request.

Light

Desk

Type: Ma Lighting DOT2*
Zero88 FLX S24

Control protocol: DMX

Dimmers

Brand: SRS Lighting

Number of channels: 96

Mobile dimmers: 2x 24

DMX free from 225

Equipment in bridges

Robert Juliat 614SX 16-35° 30x

1kW Selecon PC 26x

Par CP62/Medium flood 25x

Miscellaneous

Loose equipment*

Chauvet DJ Slimpar Q12 USB 40x

Chauvet Rogue R2x Zoom wash 12-49° 6x

**Note: Use of loose lighting equipment is subject to coordination with other venues.*

Power connections

Stage right	1x	63 ampère
	1x	125 ampère
Stage left	2x	32 ampère

Data

DMX
FOH Patch, 46 I/O to various locations in the auditorium

CAT 5e: From FOH to stage left and stage right, patchable

SDI From FOH to stage left and stage right, patchable

Video

Equipment

Fixed Projector under
Bridge:

Panasonic PT-MZ670, 6500lux, 16:10, 1920x1200

Loose projectors*:

Panasonic PT-RZ970, 10.000 lux, 16:10, 1920x1200

Panasonic PT-MZ670, 6500lux, 16:10, 1920x1200

Panasonic PT-VZ850, 5000lux, 16:10, 1920x1200

Videomixers*:

Roland VR-50HD

Roland V-40HD

Roland V-60HD

Atem Mini Pro

Projection screens*: Various projection screens available

3x 55" TV

2x 86" Touchscreen TV

** Note: Use of loose video equipment is subject to coordination with other venues.*

Other facilities:

Dressing rooms

3 dressing rooms at stage level. Dressing room 8 to 10.

Dressingroom	Mirrors	Toilet and shower?
8	8	Yes
9	7	Yes
10	8	Yes

The Small Hall has a total of 3 dressing rooms, each equipped with its own shower and toilet. Additionally, mirrors, sinks, and lockers are available. Other facilities such as an ironing board, iron, beds, and towels can be requested via facilitair@lawei.nl. The dressing rooms can be locked with a card available upon request from the technical staff.

In the green room, you can eat, drink, and cook. Our kitchen is equipped with standard appliances, such as a combination microwave, refrigerator, and induction cooktop. There is CEE power supply (32A/400V or 16A/230V) for personal kitchen equipment..

The maximum passage to the green room for personal equipment is: 0.90 x 1.97 (W x H). Access from the outside is also possible; please ask one of the technicians. The maximum passage in that case is 1.20 x 2.35 (W x H).

Note: Charging electric vehicles in the loading dock **is not permitted!** Charging stations are available at Kiryat Onoplein next to the building.

If you have any questions after reading this document, please contact the Technical Coordinator/Planner, Wiljanco de Jonge, at +31 512 – 33 50 60 or via email at techniek@lawei.nl.